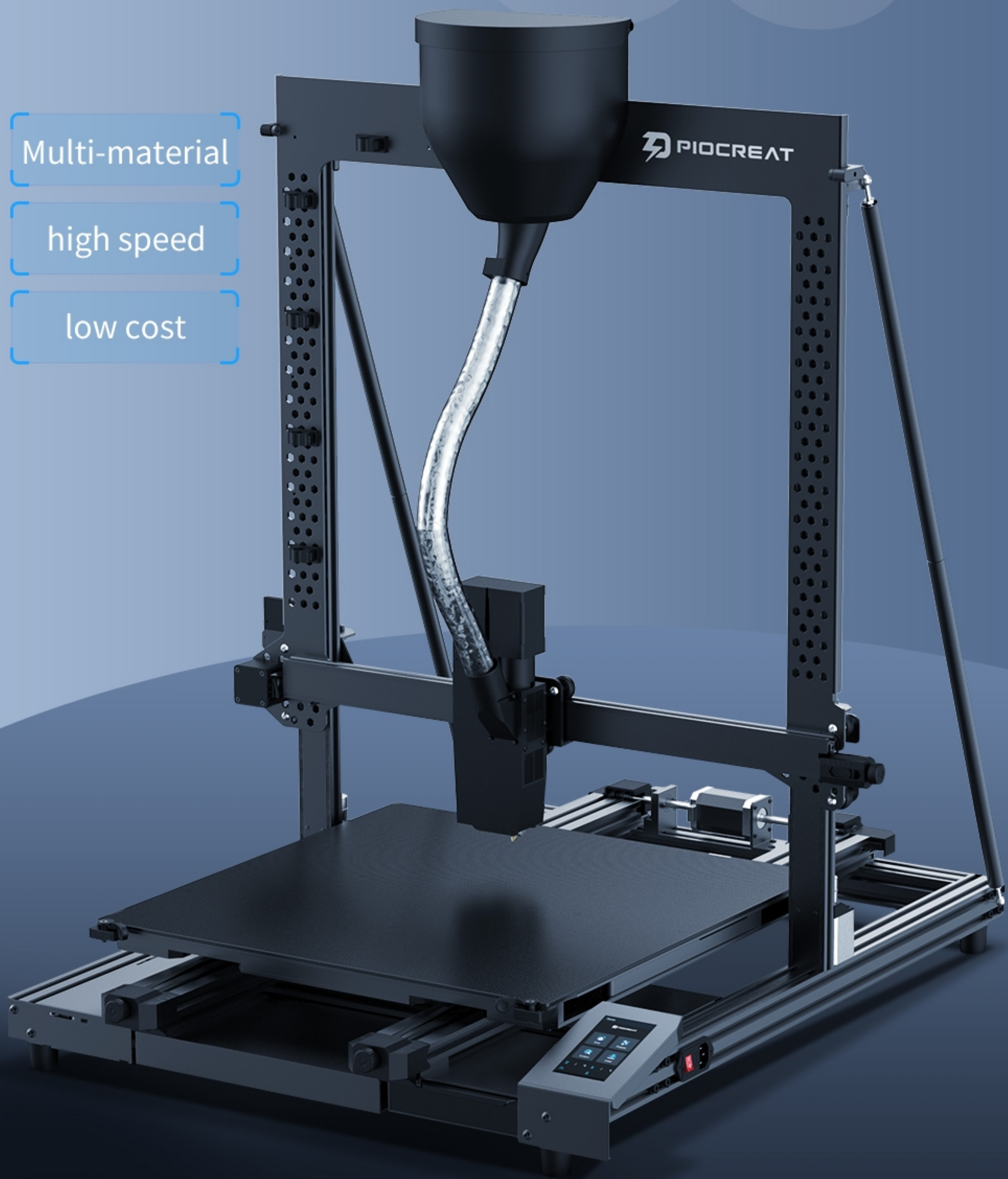


Leading the future intelligently creating infinite

Multi-material

high speed

low cost





High-speed and high-precision printing



Rapid heating of hot bed



Screw nozzle design



BL Touch Auto-leveling



Multi-pellet printing

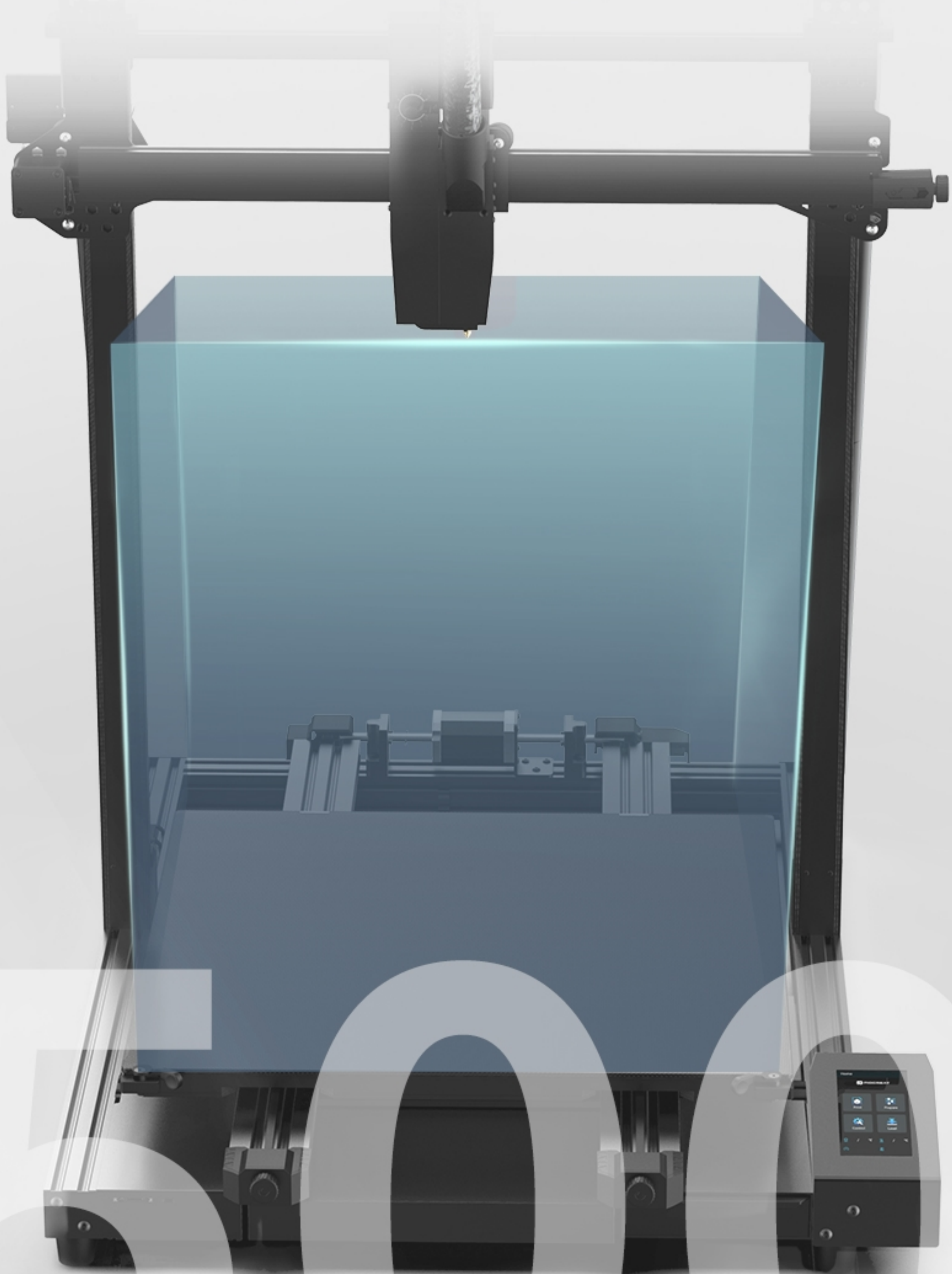


Auto-resume

Print Size

500x500x500mm

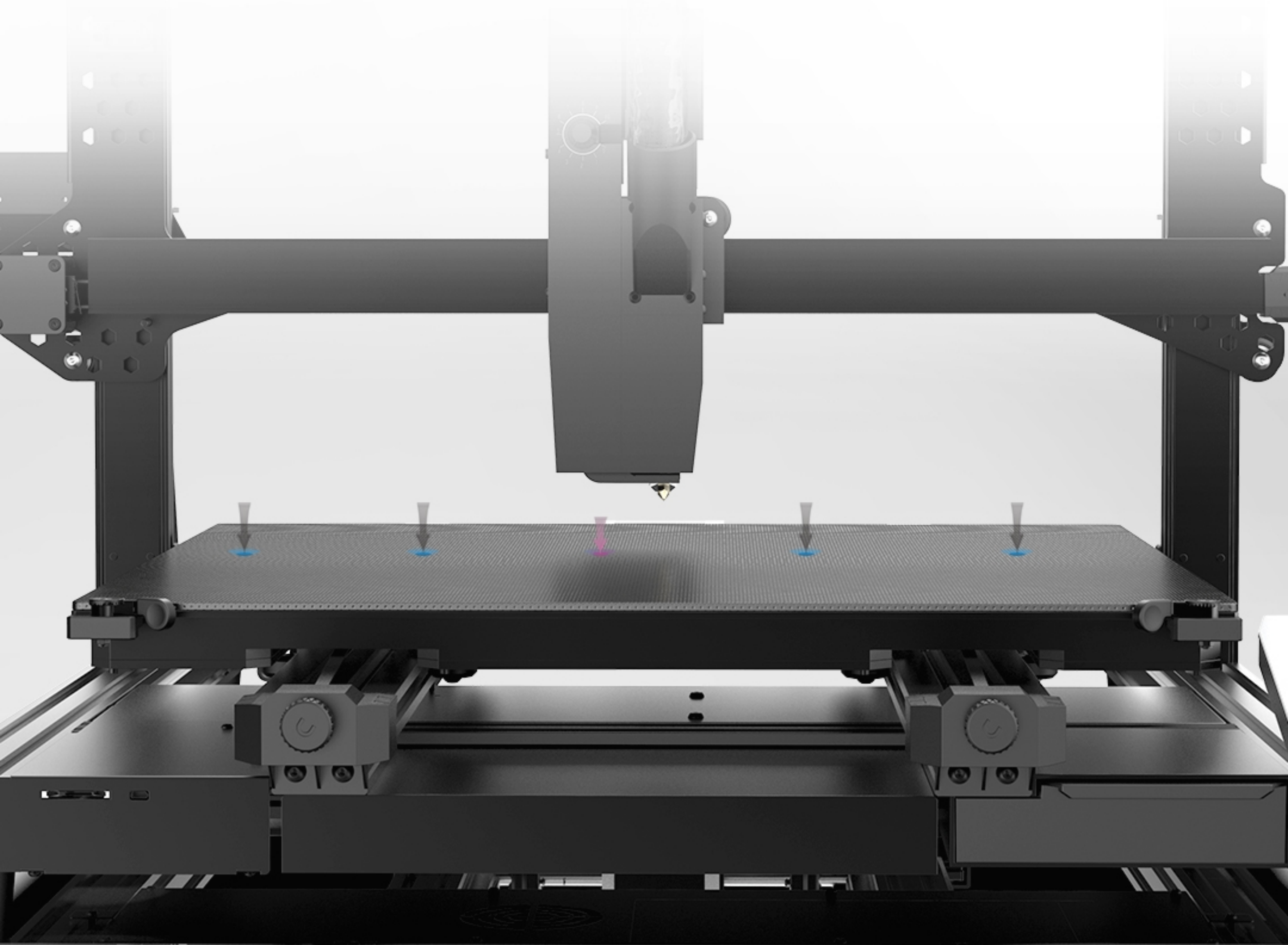
Larger build size to meet
your different creative requirements



BL Touch Auto-leveling

Adopting BL Touch intelligent leveling sensor

which can auto-leveling, print without curling,
and increase the success rate by 99%, saving time and effort



Fast Printing Experience

High-speed printing Powerful

Break the speed limitation,
max speed 100mm/s, enjoy fast printing experience

**Under the same time,
compare the printing speed**

G5 normal printing **100mm/s**

100%



normal 3D printer speed **50mm/s**

50%



Multi-Materials Printability

Compatible various pellets material

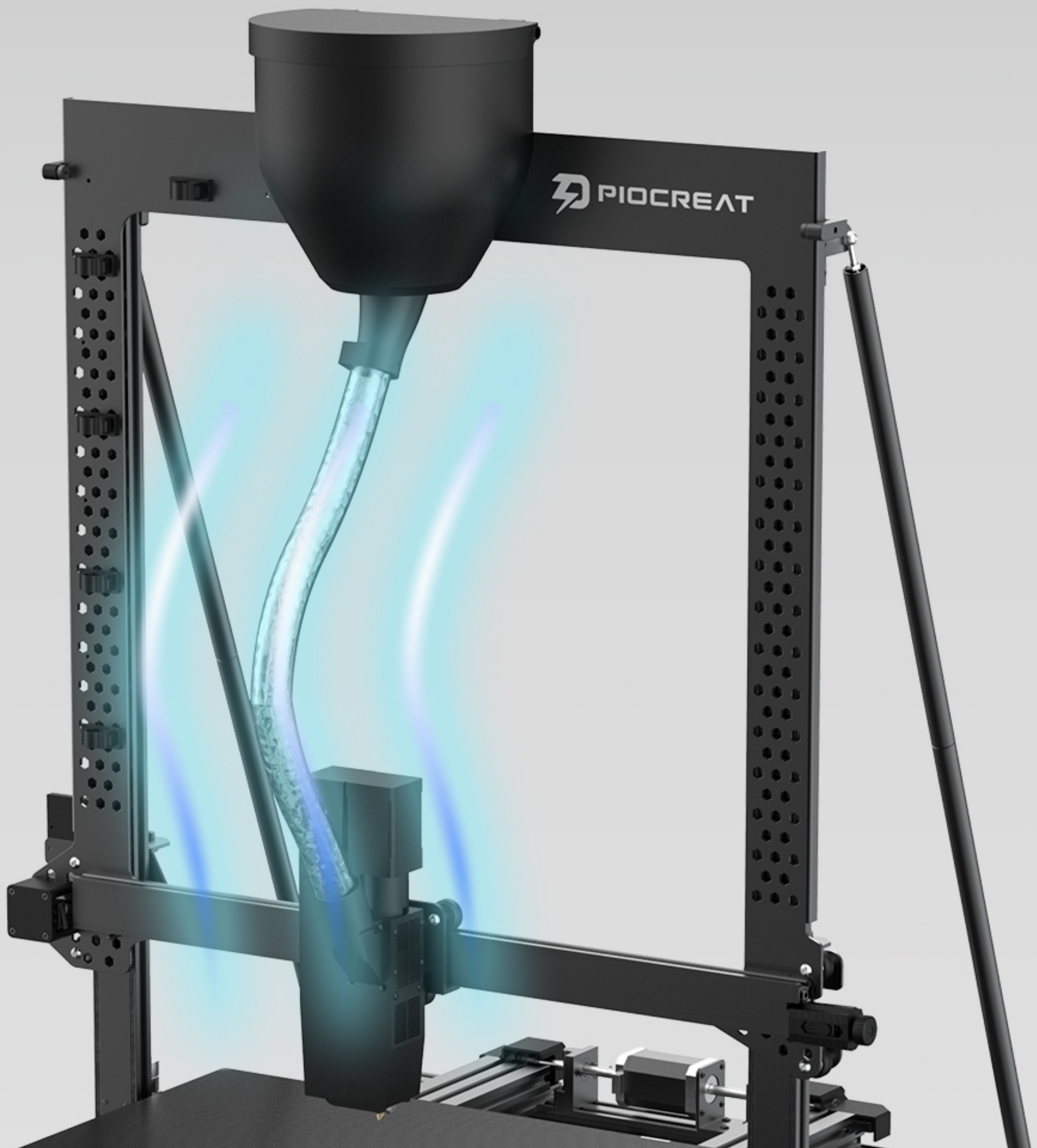
Suitable for a variety of materials,
reusable, flexible and changeable



Continuous Feeding Smooth Discharge

The hopper barrel design

Can realize continuous feeding and printing,
smooth running and durable



Screw extrusion

Ensure that the discharge is stable,
smooth, and without block

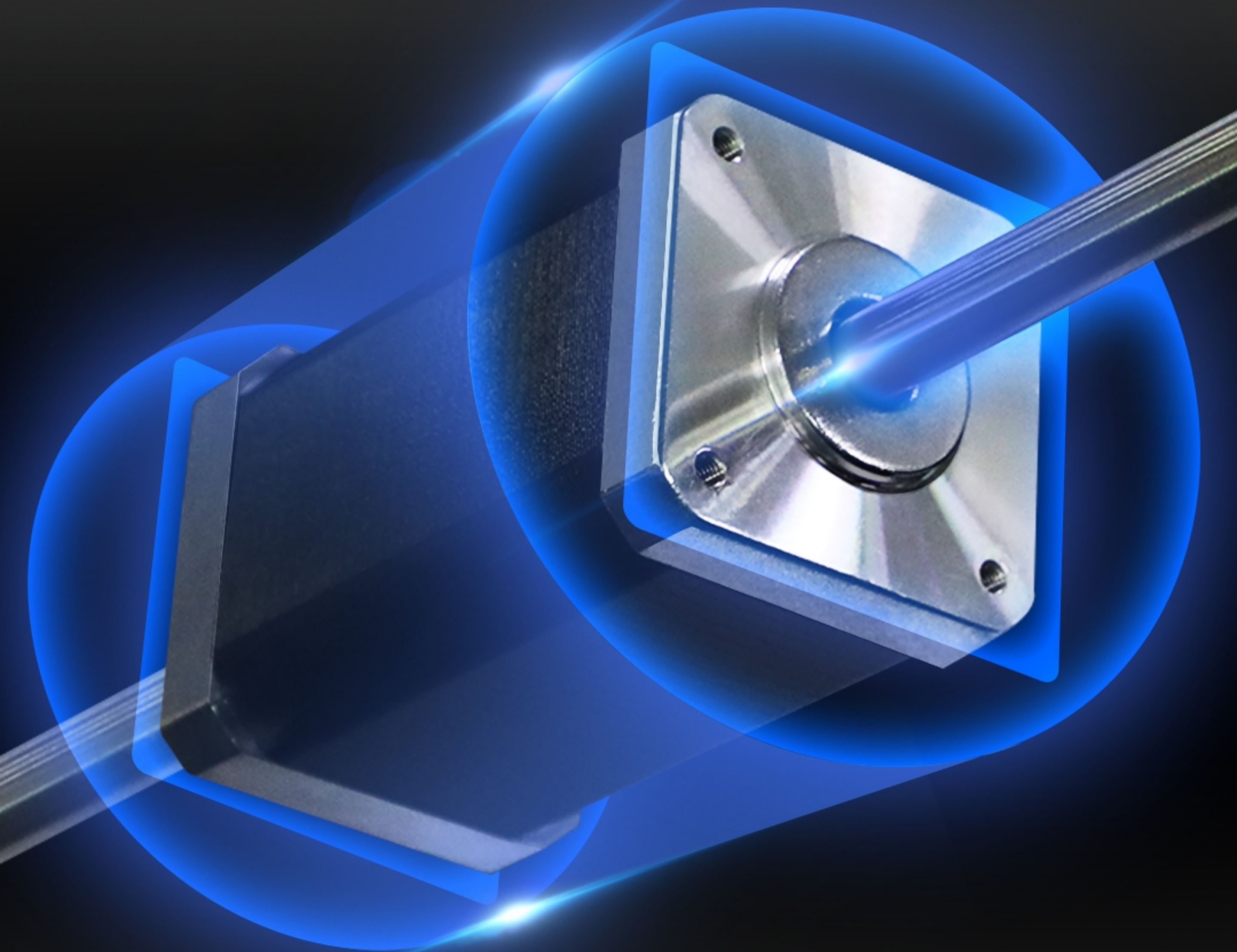
Self-developed screw extrusion, extrusion force,
uniform force, full melting of consumables,
continuous and stable feeding



Powerful motor High speed operation

Customized 42-75 high-power step motor

Use customized 42-75 high-power step motor,
stronger power, to ensure high-speed operation



Dual Z axis Tie Rod Supports

Support the stable operation of the machine

Dual Z Axis tie rod connection to reduce vibration,
the machine is more stable,
and the model printing is more exquisite



The Platform Heats up Quickly

Excellent and stable heating platform

Silicone heating platform, heating up quickly,
reducing waiting time for printing

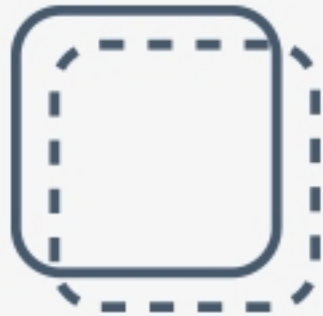
G5 only takes **2 minutes and 10 seconds** to heat up to 60°C;
normal 3D printer takes 5 minutes and 38 seconds
to heat up to 60°C for comom printers.



Heating bed
heats up rapidly



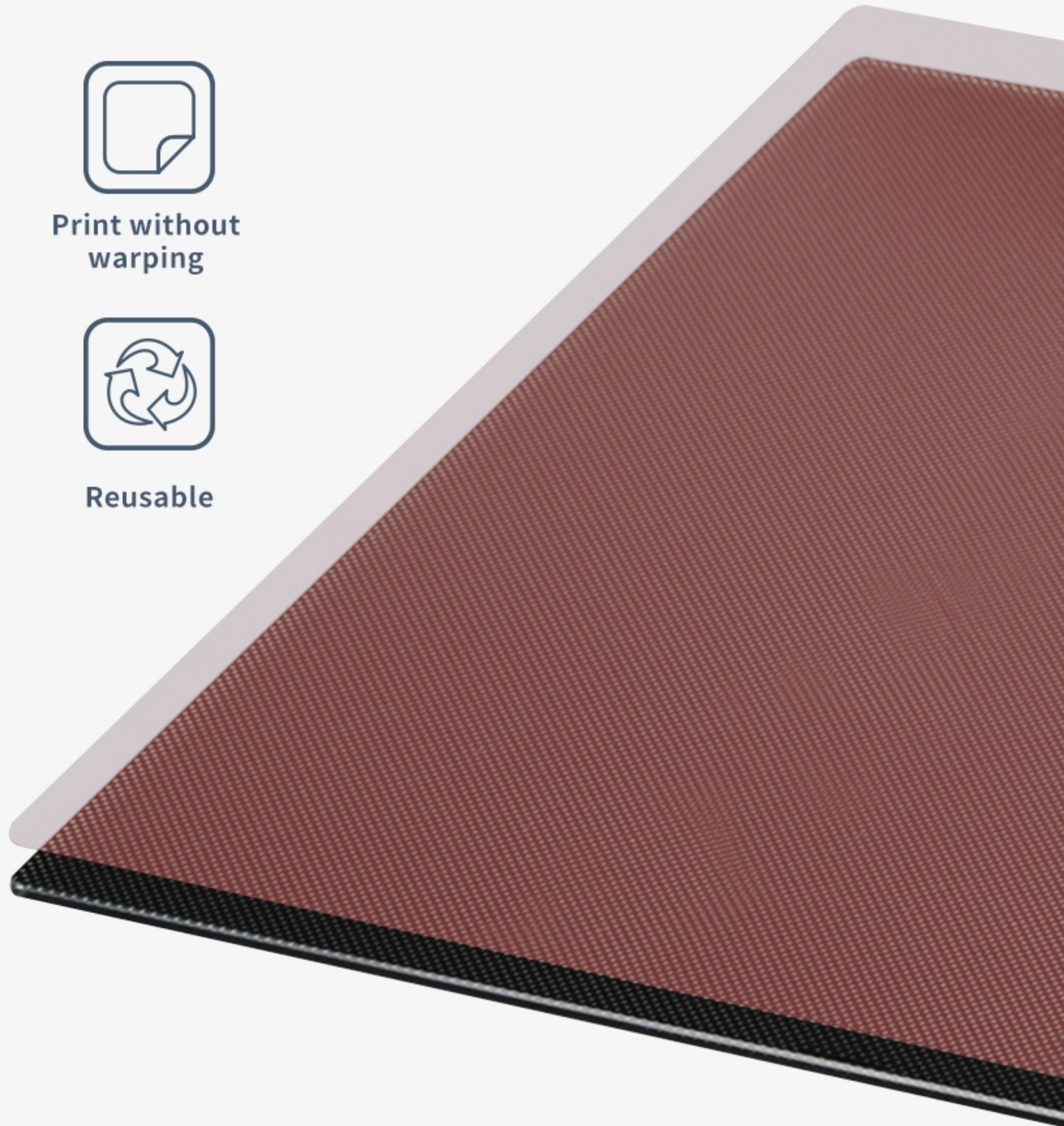
Print without
warping



Keeping
platform flat



Reusable



Application Field

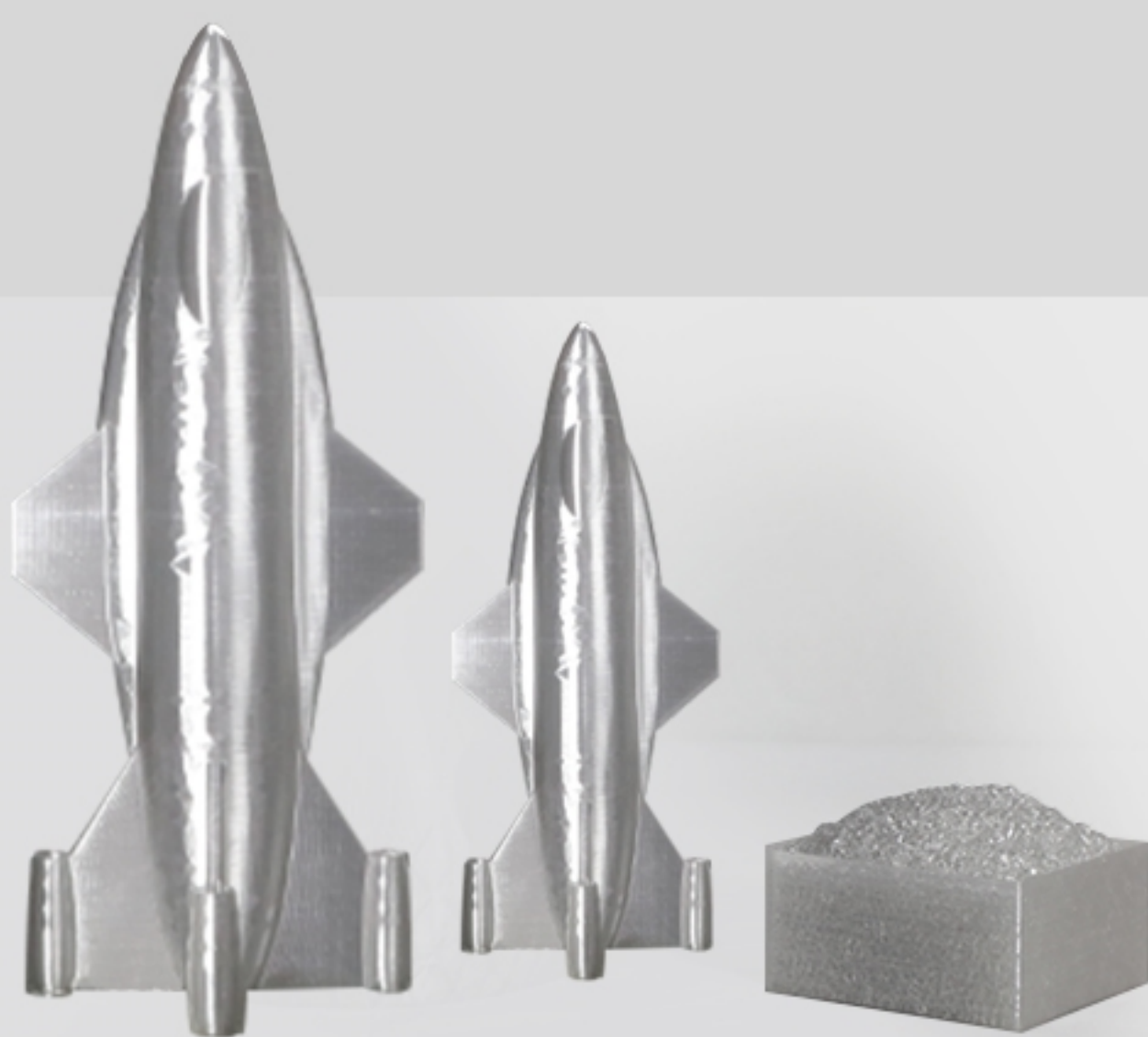
Model case



Mould



Industrial parts



Research



Sculpture

Product Parameters

G5 pellet 3D printer

Technical	FGF Fused Granulate Fabrication
Printing Size	500*500*500mm
Machine Size	940*760*960mm
Feeding structure	Screw Rod Extrusion
Nozzle	Single Nozzle
Nozzle Diameter	0.8~2mm
Printing Layer	0.2~1.0mm
Hotbed Tempature	≤150°C
Power Voltage	AC100-240V
Rated Power	1400W
Particles Diameter	2~5mm
Printing Material	PLA/ PETG/ PVC/ ABS/ PC/ PA/ HDPE/ TPU/ EVA PC+ABS; PA+Fiber; WPC; MQP-S+PA12; EVA based foam board
Nozzle Tempature	≤450°C
Slicer software	Creality Print
Printing speed	80~100mm/s
Files Format	STL/ OBJ/ AMF/ 3DMF