



Focus Series

Create an Efficient Digital Dental Solution for Each Individual





Restoration



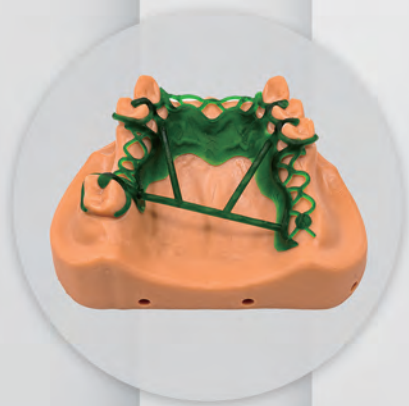
Surgical Guide



Wax Pattern



Retainer



Partial Framework

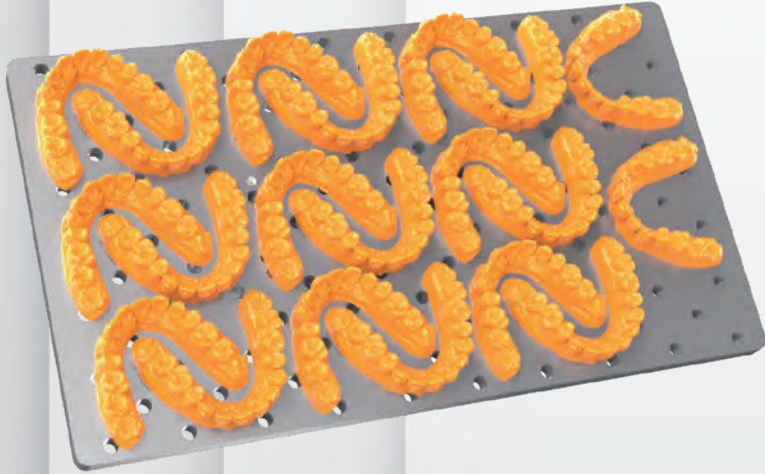


Orthodontic Dental



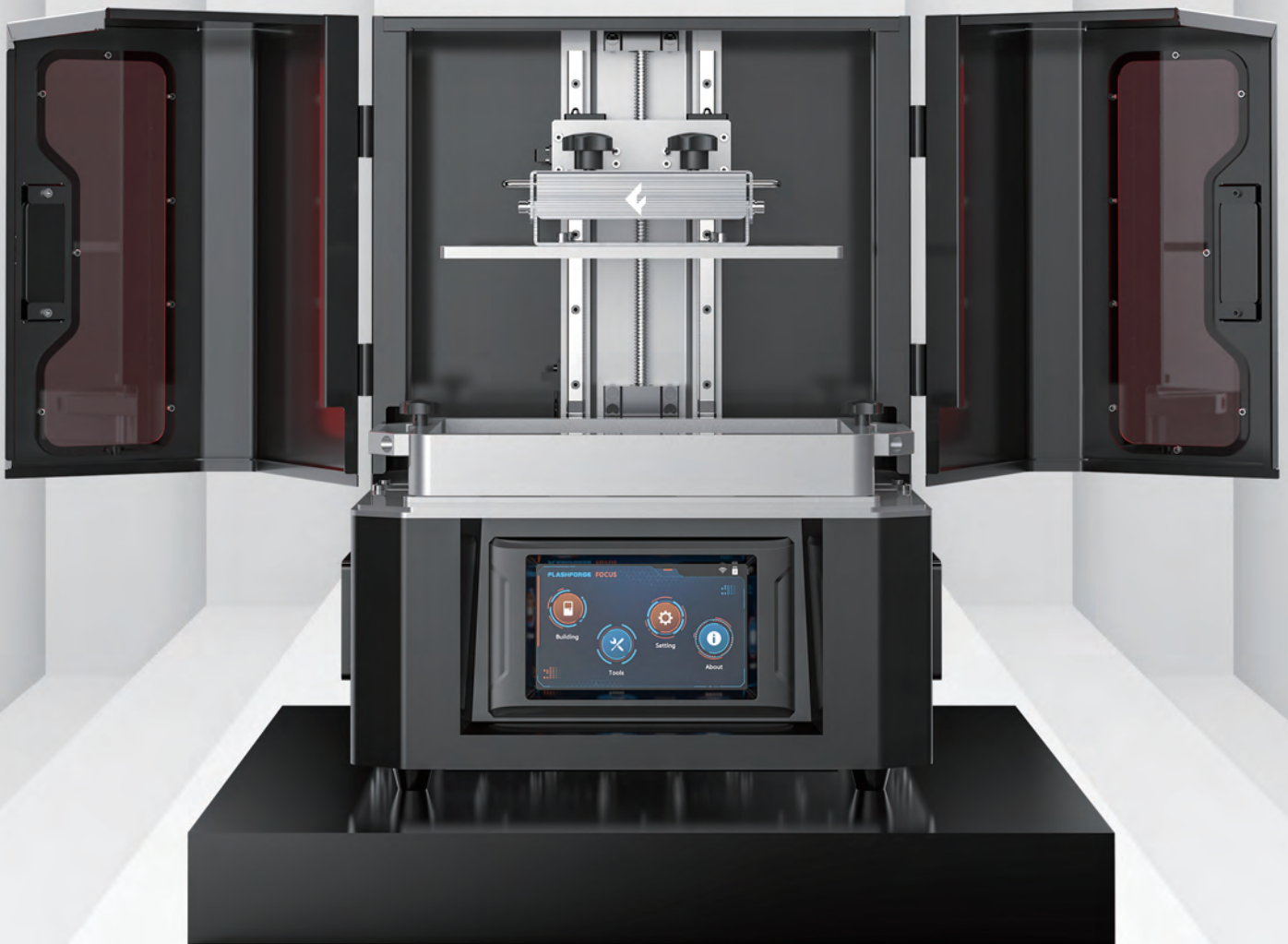
Focus 8.9

Comprehensive All-around Solution

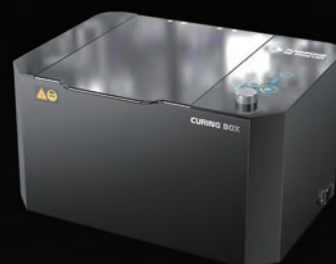


Focus 6K XL

Large-format Orthodontic Solution



Flashforge Digital Dental Solution



Oral Cavity Scan Image



Model Design



01 Scan the data

02 Design

03 3D printing
pre-processing
software

◆ Compatible with global scanning equipment

◆ Compatible with global design equipment

◆ Compatible with FlashDental software processing



Ultrasonic Cleaning Machine A



Ultrasonic Cleaning Machine B



UV Curing Box FC3

04 Printing and post-processing

05 Finished product processing



Implant Surgical Guide



Dental Crown Restoration



Orthodontic Dental Model

Printed Product Display

The equipped consumables include water-washable dental model resin, orthodontic dental model resin, etc.

The water-washable dental model resin can be cleaned with water, which reduces the cost and risk for our customers, and is characterized by environmental protection and less smell, etc. The orthodontic dental model resin will not deform under high temperature and high pressure, and features high precision and good strength, etc.

Orthodontic Model Application

FHD 1400 Yellow Dental Model Resin
& White Water Washable Dental Model Resin



- ◆ The material features high temperature resistance, and will not deform under high temperature and high pressure;
- ◆ Instead of the traditional bracket arch wire method, the design of tooth arrangement is performed after oral scanning, and then the resin is processed for vacuum forming, which eliminates many patients' aesthetic concerns about orthodontics.

Focus 8.9	Layout Quantity [regular size]: 6-8 pcs/plate		Printable Quantity of 1kg Resin: ≥ 50 models
	Printing Time	Yellow Dental Model Resin ≈ 22min [100µm layer height]	
		White Water Washable Resin ≈ 18min [100µm layer height]	

Focus 6K XL	Layout Quantity [regular size]: 16-20 pcs/plate		Printable Quantity of 1kg Resin: ≥ 50 models
	Printing Time	Yellow Dental Model Resin ≈ 30min [100µm layer height]	
		White Water Washable Resin ≈ 25min [100µm layer height]	

Dental Restoration Application

Dental Model Resin Model2.0
[reddish brown]

NEW



- ◆ High precision, high-strength structure, and less model deformation;
- ◆ Reduce the production cycle;

NEW



- ◆ Replace the traditional plaster mold and reduce the wear in the manufacturing process.

Focus 6K XL

Layout Quantity: [regular size]
22-36 pcs/plate

Focus 8.9	Layout Quantity [regular size]: 12-14 pcs/plate	Printable Quantity of 1kg Resin: ≥ 80 models
	Printing Time	Dental Model Resin ≈ 60min [50μm layer height]
Focus 6K XL	Layout Quantity [regular size]: 22-36 pcs/plate	Printable Quantity of 1kg Resin: ≥ 80 models
	Printing Time	Dental Model Resin ≈ 70min [50μm layer height]

Gingiva Mask Application

Gingiva Mask Resin

NEW



Focus 8.9	Layout Quantity [regular size]: 10-40pcs/plate
	Printable Quantity of 1kg Resin: ≥150 models
Printing Time: Gingiva Mask Resin ≈ 18min(50μm layer height)	

Dental Implant Surgical Guide Application

FHD1500 Dental Transparent Resin

- ◆ Accurately position the implantation site without damaging the nerve tissue and shorten the implantation cycle.

Focus 8.9	Layout Quantity [regular size]: 8-14pcs/plate	
	Printable Quantity of 1kg Resin: ≥ 50 models	
	Printing Time	Dental Transparent Resin ≈ 60min [50μm layer height]
Dental Transparent Resin ≈ 36min [100μm layer height]		



Dental Bracket Application

FHD1200 Dental Castable Resin

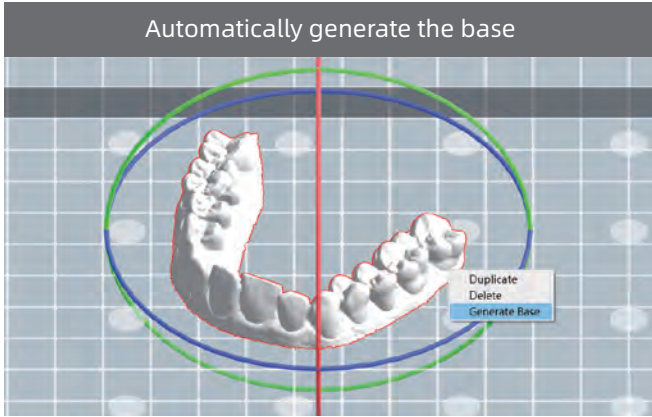
Focus 8.9	Layout Quantity [regular size]: 8-12pcs/plate	
	Printable Quantity of 1kg Resin: ≥ 100 models	
	Printing Time	Dental Castable Resin ≈ 70min [50μm layer height]



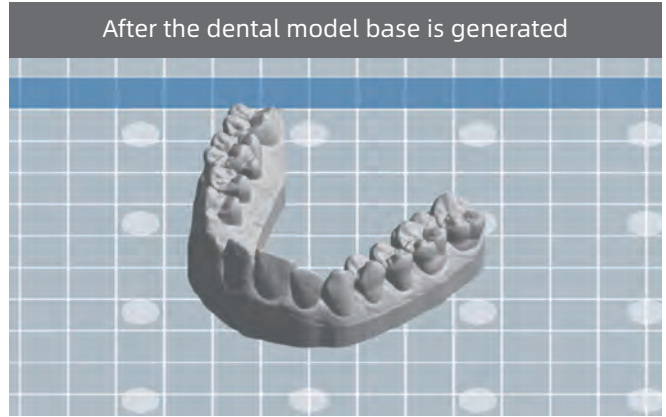
Digital Dental Professional Software

FlashDental

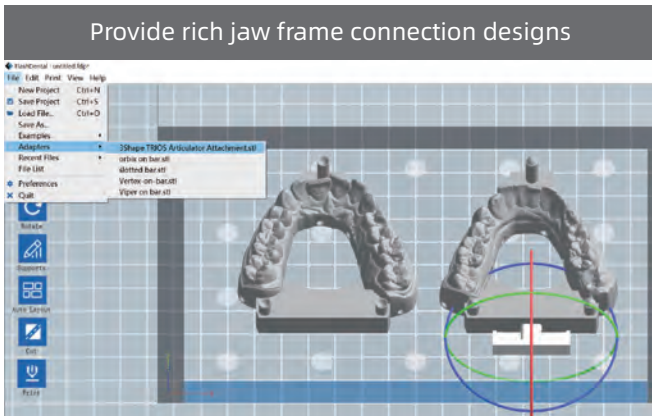
Automatically generate the base



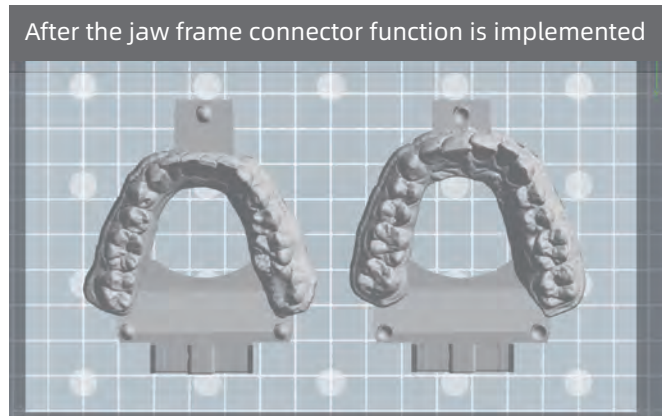
After the dental model base is generated



Provide rich jaw frame connection designs



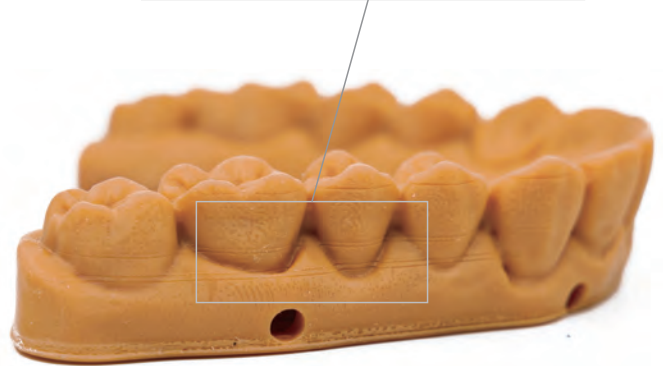
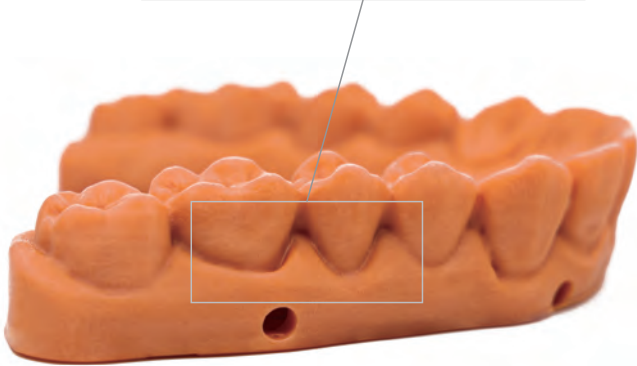
After the jaw frame connector function is implemented



Stable and Efficient Professional Dental Equipment

Precise Z-axis Motion Control System

Focus series utilizes a double linear guide rail and ball screw, which makes the platform run more smoothly during the printing process, and effectively eliminates layer lines.



Printed by Focus Series Equipment

Printed by a Common Equipment

Controlled Photonic Intelligent Production (CPIP) Technology

The CPIP technology adjusts the light intensity by layered control of the regional light intensity, and then fine-tunes the image with pixel-by-pixel compensation through compensation pictures to achieve uniform light intensity distribution on the projection surface, thus ensuring stable and efficient production of large-scale end-use dental products. In addition, the self-developed sub-pixel compensation algorithm can make the product feature smoother surface quality and more stable printing accuracy.



Printed by Focus Series Equipment

Printed by a Common Equipment

Efficient Post-processing Equipment

Professional equipment with efficient processing and curing. Improve the printing efficiency and ensure the success rate of product printing.



Ultrasonic Cleaning Machine A

360° All-round Quick Cleaning

Ultrasonic vibration cleaning function, with repeated immersion cleaning in all directions, and the residual printing resin can be easily cleaned in about 2 minutes.

2500ml Super-large Capacity

With the lengthened cleaning tank, about 10 single-arch orthodontic dental models can be cleaned at one time.



Ultrasonic Cleaning Machine B

Powerful and Penetrating Cleaning

With super ultrasonic cleaning power, it can easily penetrate the 500ml beaker resin for cleaning, and the surface of printed model can be completely removed in about 2 minutes.

Visual Design

The cleaning status of objects can be observed at any time.

Comparison of Cleaning Effects Under the Same Cleaning Time



Cleaned by Flashforge Equipment



Cleaned by A Common Equipment



Fast Curing Speed

Under the standard mode of 35°C, the conventional model can achieve the effect of non-stick surface in just 5 minutes.

Two Mode Options

Standard Mode: It can basically meet the curing requirements of different kind of Flashforge resins.

Strengthening Mode: It can meet other requirements of special resins or industrial users.

When cured by Flashforge curing box FC3, the model is not prone to scratches.



When cured by a common curing box, the model is prone to scratches.



FC3 Curing Box

Professional Services & Technical Support



Worry-free Purchase

During the warranty period, we provide free repair and parts replacement services (for damage caused by product quality problems).



Technical Explanation

We provide online technical services, and appoint professional engineers in each area to provide professional supporting explanation services.



Standby Machine Service

If the equipment is maintained for a long time, we provide the standby machine service to ensure that the normal work of customers will not be affected during the maintenance period.



Technical Training

We provide digital dental training, including training in software use, equipment operation and post-processing, etc.

Equipment Parameter

	Focus 8.9	Focus 6K XL
Print Speed	10-50 mm/H	10-30 mm/H
Build Volume	192*120*200 mm	276*155*200 mm
Layer Height	0.025-0.2 mm [Adjustable]	0.05-0.15 mm [Adjustable]
XY Resolution	50 μ m	50 μ m
Wavelength	405 nm	405 nm
Z-axis	Industrial-grade/Dual Linear Guide Rail + Ball Screw	
Projection Screen	8.9-inch 4K Monochrome Screen	12.8-inch 6K Monochrome Screen
Build Plate	Sandblasting + Drilling Platform [Increase adhesion and facilitate drainage]	
Vat Capacity	0.5L	1.8L
Connectivity	USB / Ethernet / Wi-Fi	USB / Ethernet / Wi-Fi
Power	320W	320W
Printer Dimensions	300*300*536mm	415*415*665mm
Touch Screen	3.5-inch Touch Screen	7-inch Touch Screen



Ultrasonic Cleaning Machine Parameter

Equipment Dimensions	290*233*185 mm [LWH]
Cleaning Tank Dimensions	245*150*76 mm [LWH]
Cleaning Tank Volume	2500 ml
Highest Water Level Line	2100 ml
Power/Voltage	170W / AC 220-240V / 50-60Hz
Timer Setting	180s - 280s - 380s - 480s - 90s



- ◆ Timer Setting
- ◆ Digital Display
- ◆ Industrial-grade 304 Stainless Steel Cleaning Tank

Ultrasonic Cleaning Machine Parameter

Equipment Dimensions	183*205*163 mm [LWH]
Cleaning Tank Dimensions	148*126*53 mm [LWH]
Cleaning Tank Volume	870 ml
Highest Water Level Line	720 ml
Power/Voltage	55W / AC 220-240V / 50-60Hz
Timer Setting	180s - 300s - 480s - 600s - 90s



- ◆ Timer Setting
- ◆ Digital Display
- ◆ Industrial-grade 304 Stainless Steel Cleaning Tank

FC3 Curing Box Parameter

Equipment Dimensions	399*266*225mm [LWH]
Curing Volume	φ203mm*H139mm
Curing Weight	≤500g
Curing Mode	Standard Mode/Strengthening Mode
Curing Lamp Source Wavelength	405nm LED



- ◆ Fast Curing Speed
- ◆ Two Mode Options
- ◆ Temperature Memory Function

Zhejiang Flashforge 3D Technology Co., Ltd.

Tel: +86 579 82273989

Web: www.flashforge.com

Add: No.518 XianYuan Road, Jinhua City, Zhejiang Province, China

