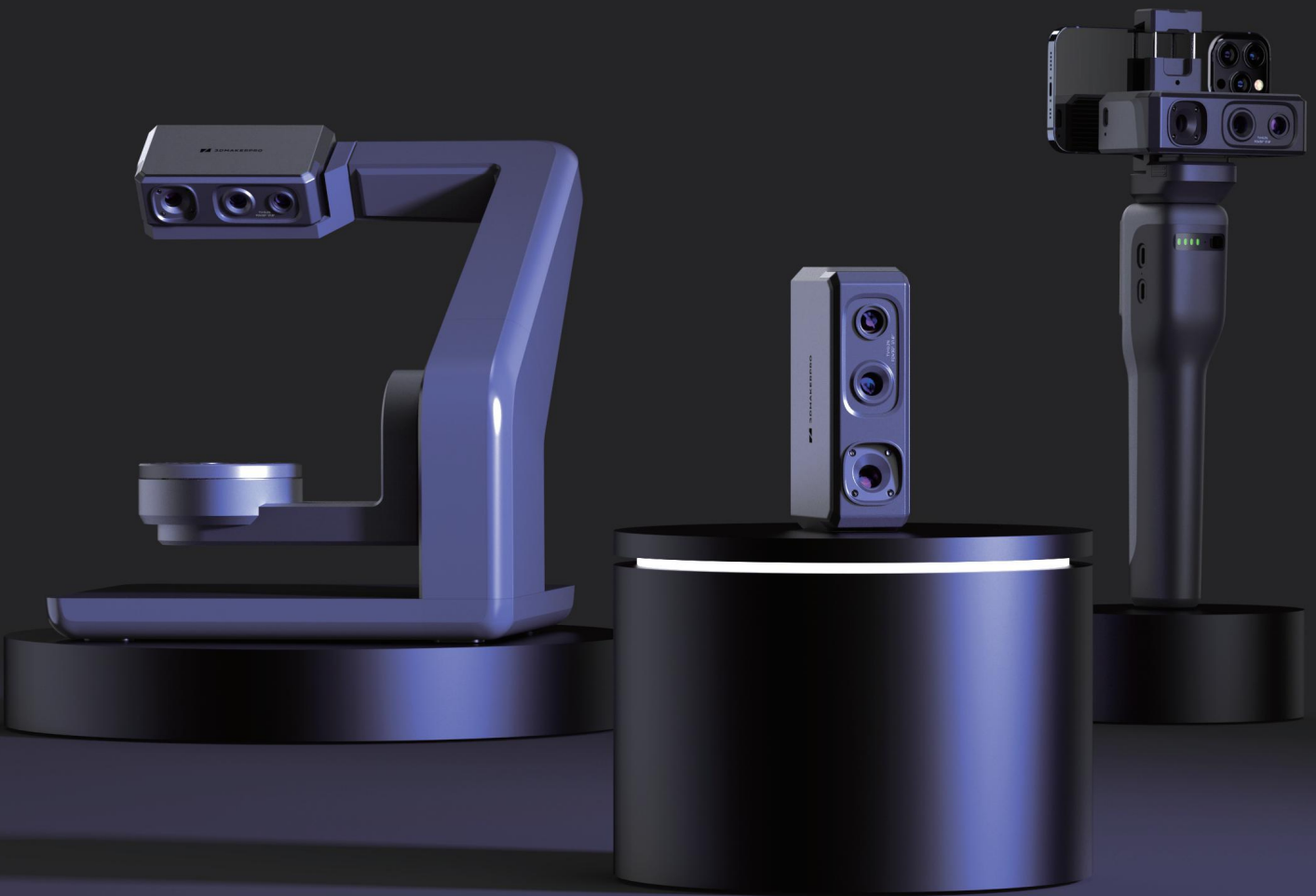


Seal

Seize what it sees



Seal^{Lite}



Seal



Weight:

200g

Pocket size scanner



SIZE: **110*60*35mm**

Seal is as small as your gum pack. Easily carry it and scan anywhere you can imagine. Even under bright sunlight.

Seal		Seal ^{Lite}	
0.01mm Accuracy	0.05mm Resolution	0.02mm Accuracy	0.07mm Resolution
Outer casing material Aluminum alloy	24-bit color texture	Outer casing material Plastic	Mono texture

Seal

HANDHELD SCANNER



HANDHELD SCANNER



Scan distance display



240 minutes of scanning time

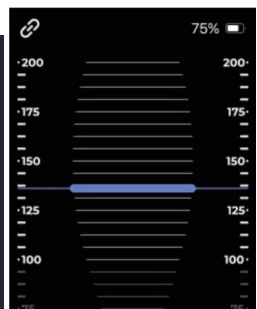


One-Click Scan



AI Smart + Power Grip

Newly innovated gimbal provides you an absolute free environment during scanning.



Smart Vi Interaction

Born for Newbie. Smart Vi screen allows you to scan with ease.

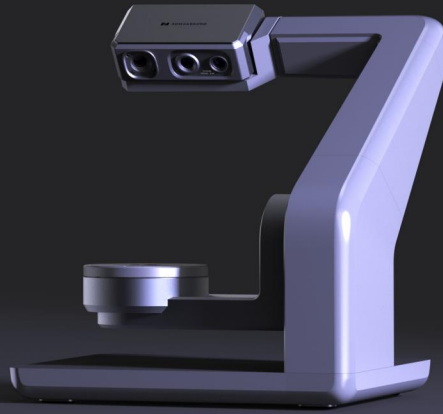


Anti-shake Optical Lenses

No Single Detail Is Left Behind.

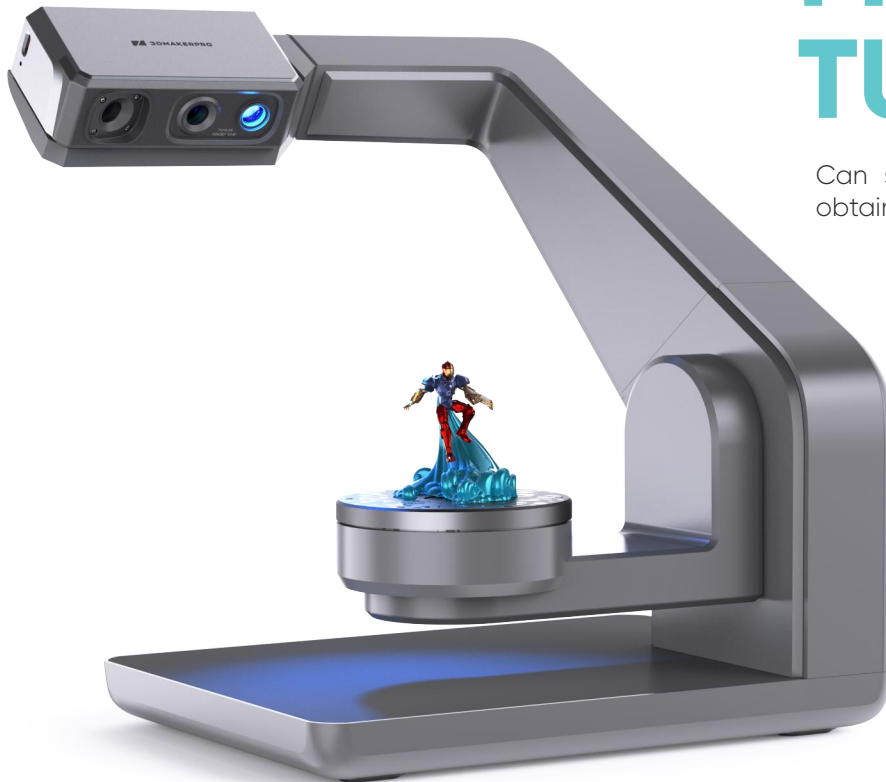
Seal

MULTI-AXIS TURNTABLE



MULTI-AXIS TURNTABLE

Can scan items at 720 degrees, efficiently obtaining accurate 3D model data.



Fully Automatic



Script editing



Bluetooth

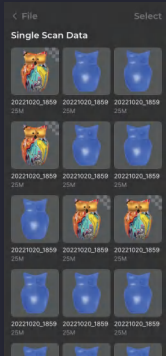
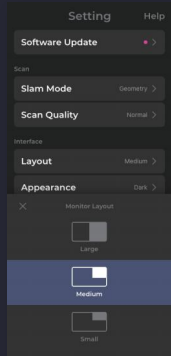


720 degrees

Easily scan objects with automation that lets beginners scan like a pro, and advanced customization with script editing for experts.

Operating Software

Mobile



JM Studio for Mobile

JMStudio has launched a mobile version as part of the 3Dmakerpro lightweight scanning plan. Paired with Connect, you can now scan and obtain any 3D model you desire, anywhere.

PC



JM Studio for PC

JMStudio is 3Dmakerpro's exclusive software, handling multi-mode data acquisition, high-def preview, texture mapping, and 3D model generation for scanning equipment.

Scenes to be used



DIY



Miniature



Digital Collection



Board Game





3DMAKERPRO

Scan Performance Parameters:

Seal

Accuracy:	0.01mm	Resolution:	0.05mm
Frame rate:	10fps	Tracking Mode:	Visual Tracking
Work Distance:	100-200mm	Single Capture Range:	56x100mm
Minimum Scanning:	10x10x10mm	USB interface:	USB Type-C
Dimensions:	110*60*35mm	Weight:	200g

Seal Lite

Accuracy:	0.02mm	Resolution:	0.07mm
Frame rate:	10fps	Tracking Mode:	Visual Tracking
Work Distance:	100-200mm	Single Capture Range:	56x100mm
Minimum Scanning:	10x10x10mm	USB interface:	USB Type-C
Dimensions:	110*60*35mm	Weight:	190g

Software System Requirements:

Output format:OBJ/STL/PLY

Compatible system: Windows10/11 64bit, MacOS12/13

Compatible Mobile: Android11, IOS16 (Extended support)

Minimum computer requirements: Intel Core i5 8th, 16GB RAM, MX250 GPU with 2GB VRAM

Recommended computer requirements: Intel Core i7 8th, 16GB RAM, NVidia1060 GPU with 4GB VRAM

3DMAKERPRO

- @3DMakerProCares
- @official3DMakerpro
- @3DMakerpro
- <https://store.3dmakerpro.com/>
- service@3dmakerpro.com

JimuMeta

- @JimuMeta
- @JimuMeta
- <https://www.jimumeta.com/>
- +1 (657) 999-5524
- service@jimumeta.com

